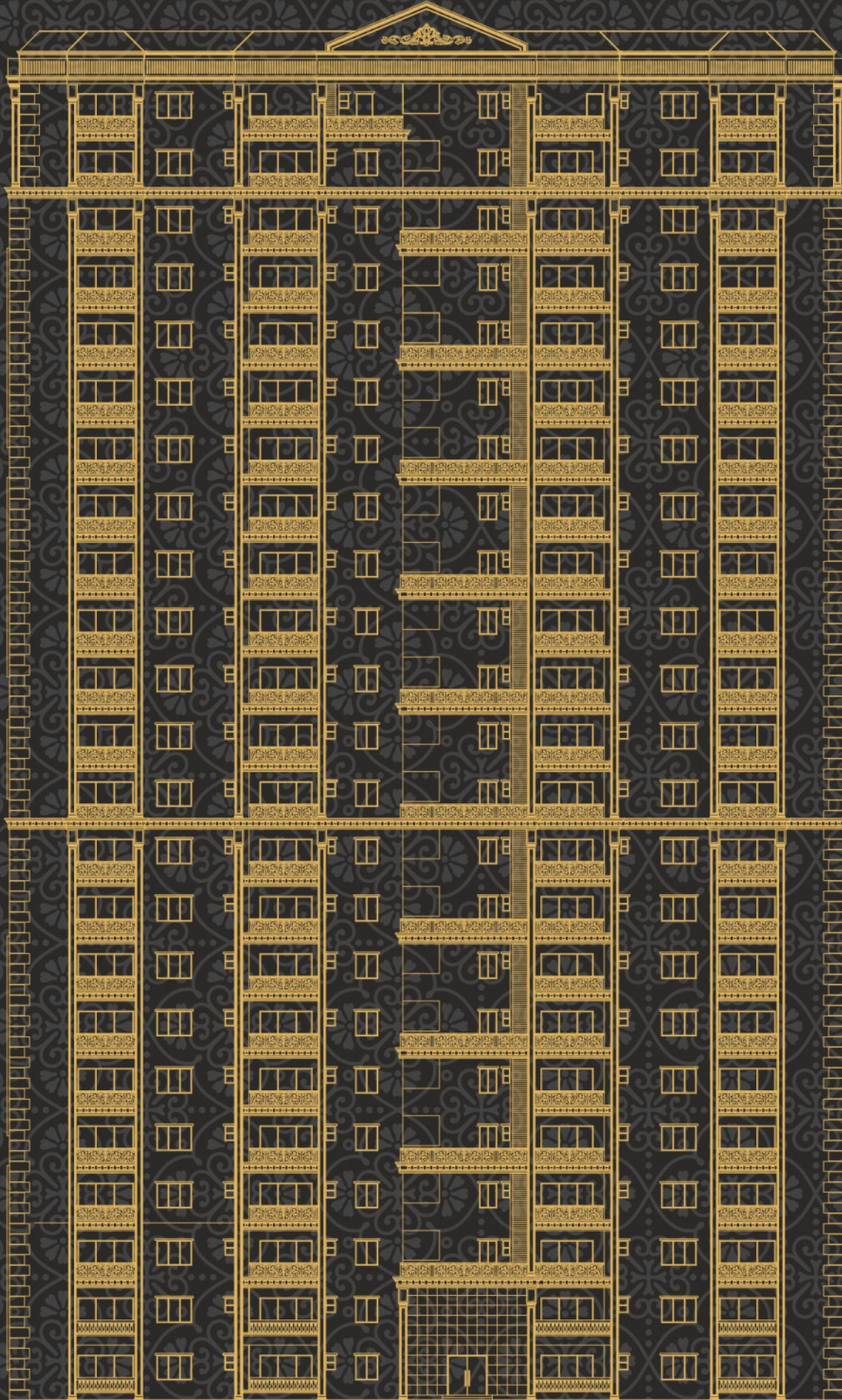




URBANAC
SKY MANSION
Commodious 5BHK + Servant Apartment





To be a part of
exceptional commodious
Ultra Luxury Living

Stock image



Artistic Impression



URBANAC
SKY MANSION

Commodious 5BHK + Servant Apartment

RERA No.: UPRERAPRJ286983/02/2024

*A destination having
King-size Spacious
Apartment*

*in Lucknow that provides
you with everything
king-size and exceptional
level of comfort,
convenience & amenities.*

What makes it
Royal

- Double height Terrace Garden
- Higher ceiling than regular apartment
- Two elevators between 2 flats on each floor
- More spacious than regular apartment
- High speed elevators





*A place where
Expectations are reached.*

- Situated at fastest Developing Location of Lucknow
- Close to Iconic places of Lucknow
- 2 Towers of 23 Storey each
- Commodious 5 BHK + Servant with lush green Natural Terrace Garden

It is widely accepted that every person likes sunrise & sunset,
Enjoy your sunrise & sunset
with balconies & Terrace Garden
in each apartment



Balcony

Stock image

Personal Terrace Garden



Stock image



Lavishness

is waiting for your arrival

- *Double Height Entrance Lobby*

Artistic Impression



*A perfect destination for
Nature Lovers.*

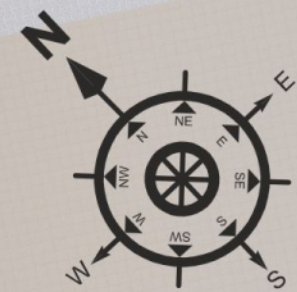
- Double height lush green natural Terrace Garden in each apartment

Artistic Impression

Site Plan

Legend:

- 01 - Main Entry / Exit
- 02 - Entry (Basement Parking)
- 03 - Exit (Basement Parking)
- 04 - Entry Tower-1 (A)
- 05 - Entry Tower-2 (B)
- 06 - Swimming Pool
- 07 - Jogging Track
- 08 - Kids Playing Area
- 09 - Outdoor GYM
- 10 - Outdoor Badminton Court
- 11 - Gazebo
- 12 - Multi-Purpose Lawn
- 13 - TOT Lot
- 14 - Cricket Practice Net
- 15 - Outdoor Seating
- 16 - Amphitheatre
- 17 - Second Entry / Exit





Artistic Impression

*Luxury
at your leisure*

• Semi Covered Swimming Pool

Let the kids & young children
Play Separately

- Kids playing area
- TOT Lot area



Artistic Impression

Make a
Healthy Lifestyle
and get rid of obstacles

- Outdoor GYM



Artistic Impression

*A path to follow
to be Fit*

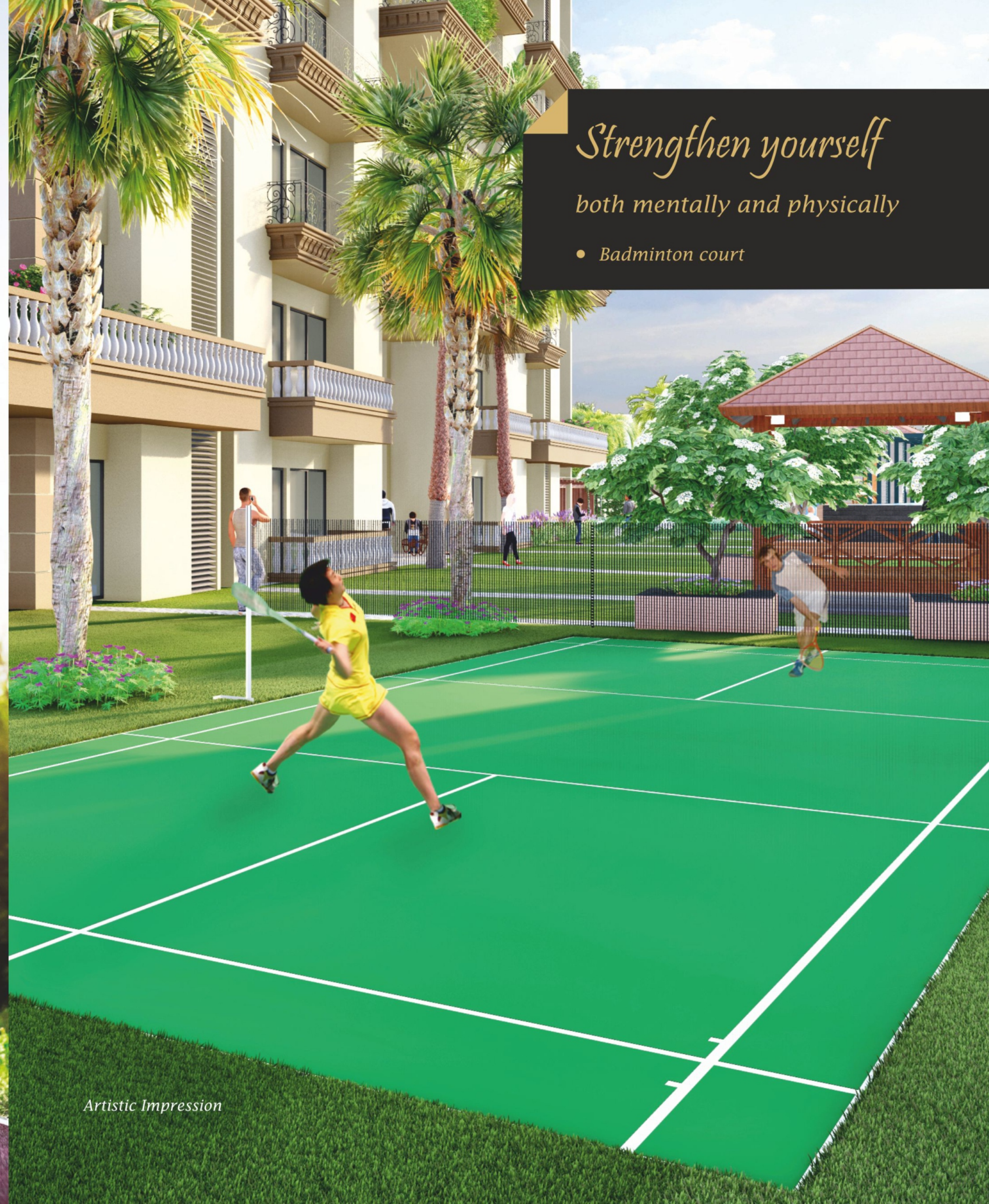
- Jogging Track (EPDM Flooring)



Stock image

*Strengthen yourself
both mentally and physically*

- Badminton court



Artistic Impression

Add
Aesthetic surroundings
to your living

- *Multi Purpose Lawn*





Develop your overall fitness,
Stamina & Hand eye coordination

• Cricket Practice Net



Open Spaces

*getting to know other individuals
who share your interest*

- *Amphitheatre*

Club Facility

- Board Games



Artistic Impression

Club Facility

• Indoor GYM



PUSH
YOURSELF
NO ONE IS GOING TO DO IT FOR YOU

BEAST
MODE
ON

Artistic Impression

Club Facility

- Pool
- Table Tennis
- Snooker



Bedroom



Family Lounge





Balcony
Living Room
Area

Artistic Impression



Artistic Impression

Living Room



Kitchen

Artistic Impression



Balcony
Bedroom
Area

Artistic Impression



Kitchen

Artistic Impression

Cluster Plan

(GF*, 2, 4, 6, 8, 10, 12, 14, 16, 18, 20)



* Note: Type-01 Flat on ground floor is without servant room and its toilet.

Typical Floor Plan



TYPE - 01

Floor - GF*, 2, 4, 6, 8, 10, 12, 14, 16, 18, 20
CARPET AREA - 3326 SQ. FT.

* Note: Type-01 Flat on ground floor is without servant room and its toilet.



TYPE - 02

Floor - GF, 2, 4, 6, 8, 10, 12, 14, 16, 18, 20
CARPET AREA - 3311 SQ. FT.





CHINMAY

DEVELOPERS

A Smart Move in Real Estate to Provide Lucknow with state-of-the-art Living Standard.

Chinmay Group has always been delivering the best construction Quality with state of the art living standard to Lucknow. Since its inception, It has successfully handed over numerous Residential projects and Commercial Project with ongoing development of Villa Project, which has added one more feather in our cap.

Now the Group has introduced commodious 5BHK+ Servant apartment to Lucknow with most desired amenities envisaging to provide new heights to the living standard to Lucknowites.

Ongoing Projects



Urbanac Garden
Near HCL IT City, Mastemau, Lucknow



Prominent Mall
Near Mohibullapur Railway Station, Sitapur Road, Lucknow

Delivered Projects



Celebrity Greens
Tower N & P, Ansal API, Lucknow



Celebrity Meadows
Tower-M, Ansal API, Lucknow



Urbanac Business Park (Commercial)
Vibhuti Khand, Gomti Nagar, Lucknow



Spring Greens
Ayodhya Road (Faizabad Road), Lucknow

Location Map



Abundant choices :

Ekana International Cricket Stadium	3 min
Phoenix Palassio Shopping Mall	3 min
LuLu Mall	10 min
Medanta Hospital	10 min
Airport	20 min
Railway Station	30 min

Map is indicative, not to scale

Disclaimer: Visuals shown in the brochure are purely conceptual, elevation, specifications, site plans, etc. of the townships are tentative and subject to variation and modification by the company at its sole discretion.



CHINMAY

DEVELOPERS

Office Address: Off. No. 705-706, 7th Floor, Urbanac Business Park, A-1, Vibhuti Khand, Gomti Nagar, Lucknow - 226010

Site Address: Near HCL IT City, Mastemau, Lucknow - 226002

Tel. No.: +91-7084841212, 9235535555, 9235627808

E-mail: contact@chinmaydevelopers.com | **Website:** www.chinmaydevelopers.com

Project Architect - Vishal & Associates: +91-9839447965, 9839097571

Scan for Project details



Project RERA No. UPRERAPRJ286983/02/2024

Website: <https://up-rera.in/projects>

Disclaimer: The views/layouts/images/designs/specifications shown in the brochure may vary from the final approved map and do not guarantee the same. All intending purchasers are bound to inspect all plans and approvals, visit project site and acquaint themselves with all plans and approvals and other relevant information. Nothing in this brochure is intended to provide the intending purchaser with a variation on the actual plans and approvals obtained from time to time. The terms and conditions applicable to both the Developer and the Customer will be governed strictly by the agreements executed from time to time and not on the terms of this brochure. All designs are indicative only.

This brochure is merely conceptual and is not a legal document. It can be treated as merely indicative of the Project. The Developer reserves right to change, amend, and modify the contents of the brochure and architectural specifications during the development stages, finishing material might vary in the project due to not availability of material during the period of construction but specifications would remain the same. Allottee(s) has to accept such variation(s). The Developer, Management holds no responsibility for its accuracy and shall not be liable to any intending purchaser or anyone for the changes/alteration/improvement so made.

This brochure contains artistic impressions / stock images and no warranty is expressly or impliedly given that the complete development will comply in any degree with such artistic impressions / stock images as depicted. The landscape, water bodies, details of lobbies, features & facilities of the common club or any other area, future accessories, painting items, electronics goods, fittings/fixtures, decorative items, false ceiling including finishing materials specifications, shades, size, etc. shown in the picture are only indicative and for illustrative purpose only and does not form a part of standard specifications. Recipients are advised to apprise themselves of the necessary and relevant information about the project/offer before making any purchase decisions. The sale of the Flat is subject to the terms of Application Form and Agreement for Sale. All specifications of the unit shall be as per the final agreement between the parties. Photographs/views are representative images only.