



# Luxury That Your Life Deserves



UPRERA NO.: UPRERAPRJ922474

Villas & Plots

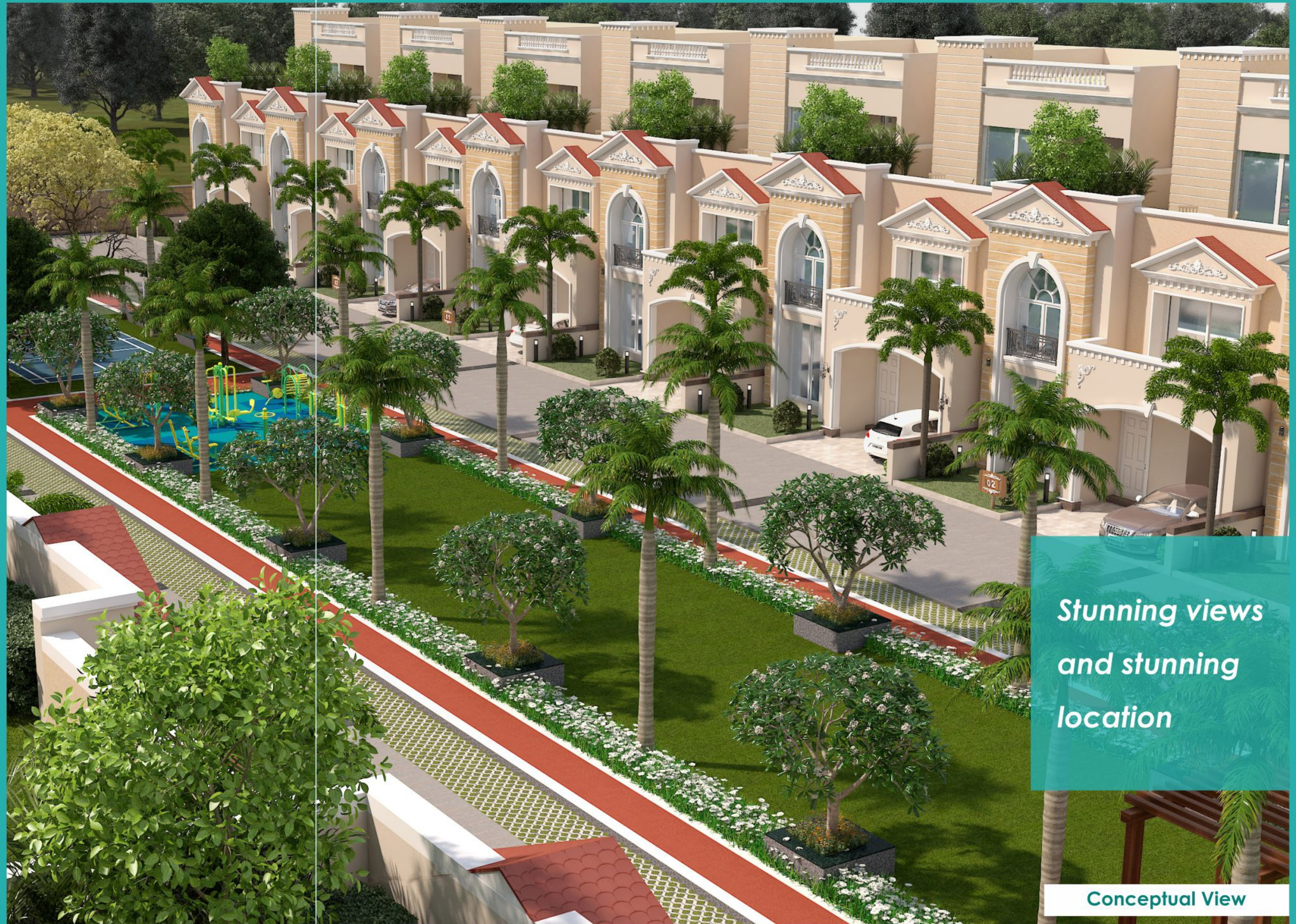




## Living style of the Upper Echelons of Lucknow

The township is in the close vicinity of social infrastructures : schools, hospitals tech hubs, hotels, stadium, retail and commercial zones. The township has a magnificent space planning that befits the lifestyle of the upper echelons. The homes of the Urbanac Garden are truly functional where every square foot serves a meaningful purpose.

The close proximity of the airport, as well as major malls, expressways, hotels, Restaurants and hospitals to Urbanac Garden offers a unique opportunity to enjoy a lifestyle replete with exclusive luxuries, coupled with seamless connectivity to every major hub in the city.



**Stunning views  
and stunning  
location**

**Conceptual View**





*Live freely,  
breathe freely  
at a home in  
the midst of  
garden.*



## Exclusive Privileges

Urbanac Garden is fully equipped with all that you & your family need to enjoy exclusive privileges. It is surrounded by IT Hub, Sports Stadium and state-of-the-art shopping complex.

Altogether Urbanac Garden is presenting you with a home that is perfect in every aspect and having every comfort & luxury that you and your family desire.

Conceptual View



*Change in life that you & your family is looking for !*

### *Premium Features*

- Lush Green Landscape
- Outdoor Gymnasium
- Children Playing area with swings
- Open Air Theatre

### *Salient Features*

- Single Gated Community
- Sewer Line with sewage treatment plan
- RCC Roads
- Rain Water Harvesting
- Street lights
- Guard Rooms
- DG For Common Area
- Round The Clock CCTV Monitoring for Security on the Entry Gate
- Underground Water Tank with Booster Pump







*Where you live in a nature friendly modernity !*

*Stay Healthy & Fit*

Urbanac Garden has the nature friendly modern features which let you enjoy the life to the fullest. Urbanac Garden has most of the sports facilities which you need to keep yourself & your family healthy.

- Open Badminton Synthetic Court
- Jogging track with EPDM Flooring
- Single pole practice basketball court



# KEY PLAN



GP2

GP1

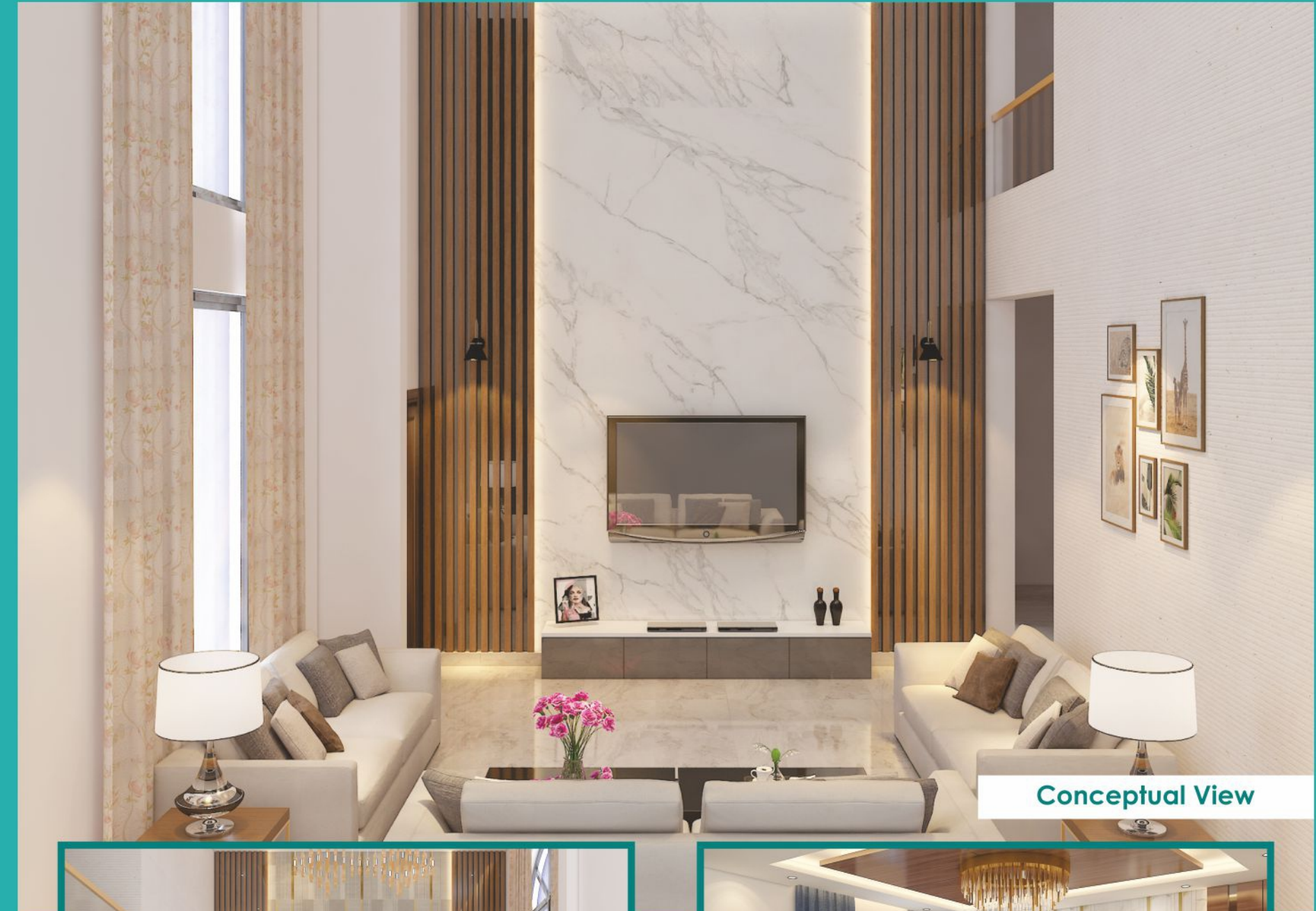
Conceptual View



## *A luxurious lifestyle you desire for !*

Urbanac Graden has all the requisite state - of - the - art features and facilities which would make your life easier in every sense of the words. Some of the features are :

- Quality planned infrastructure
- Well planned drainage system



Conceptual View



Conceptual View

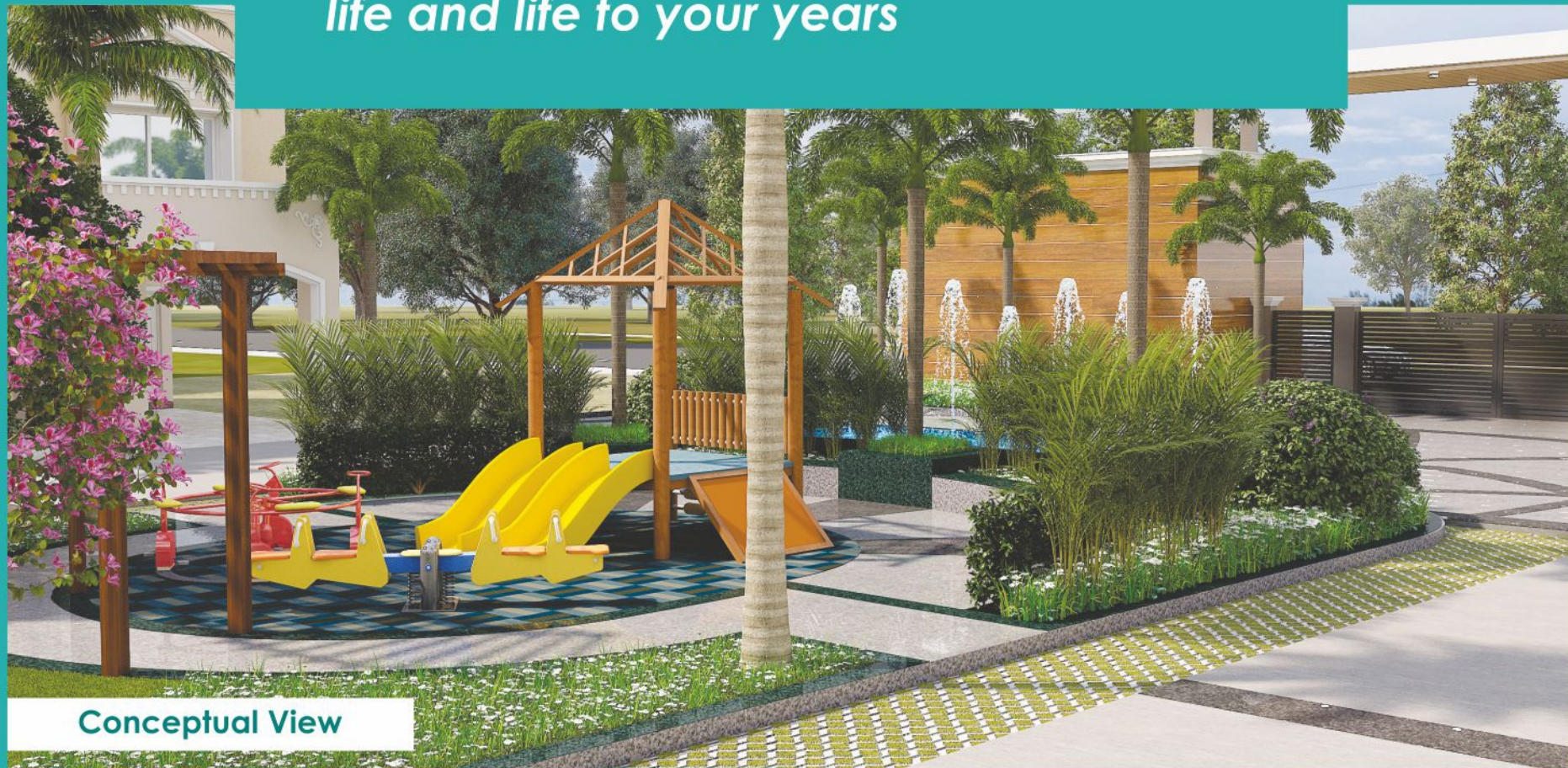




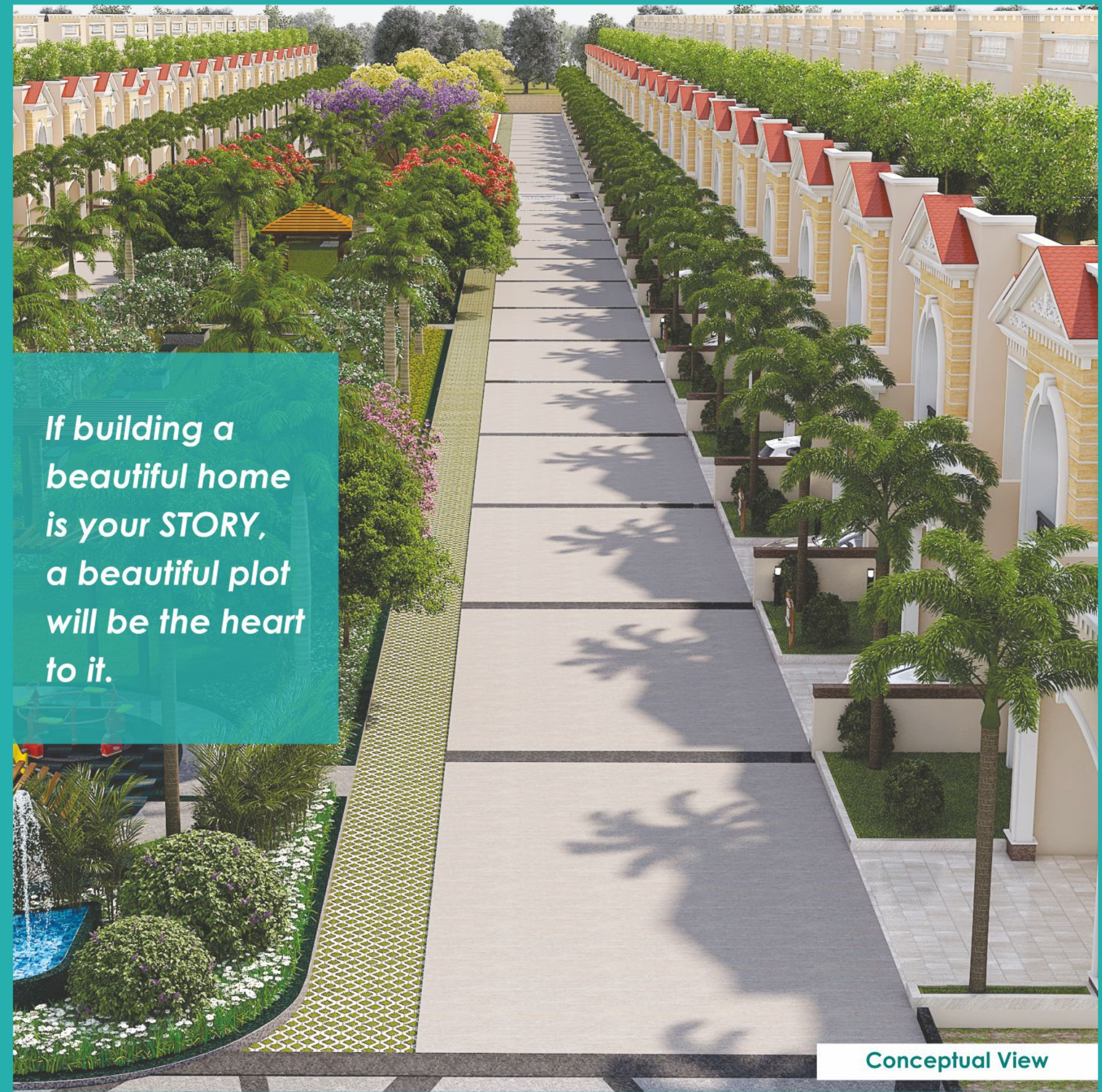




*Nature friendly living adds years to your life and life to your years*



Conceptual View

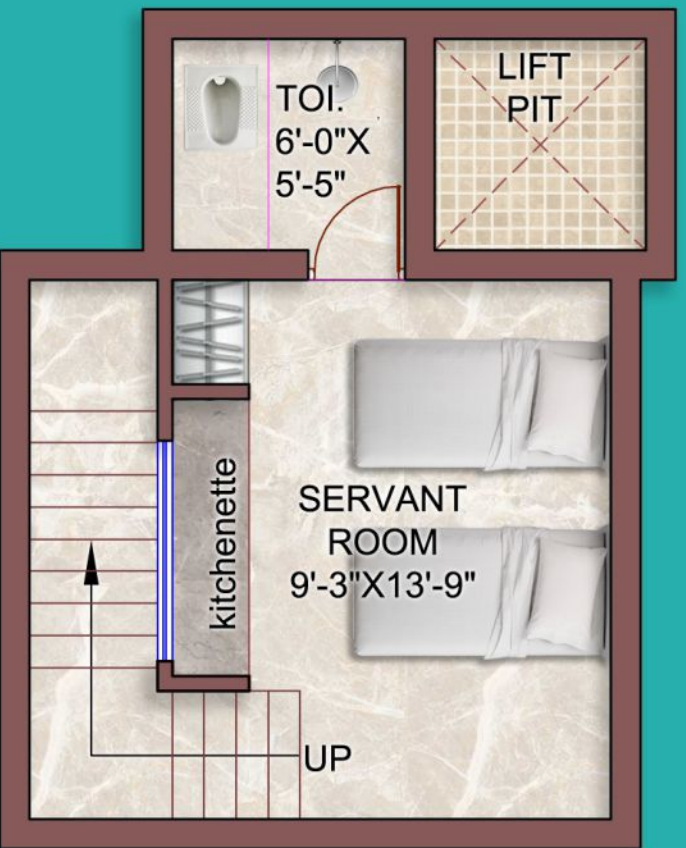


*If building a beautiful home is your STORY, a beautiful plot will be the heart to it.*

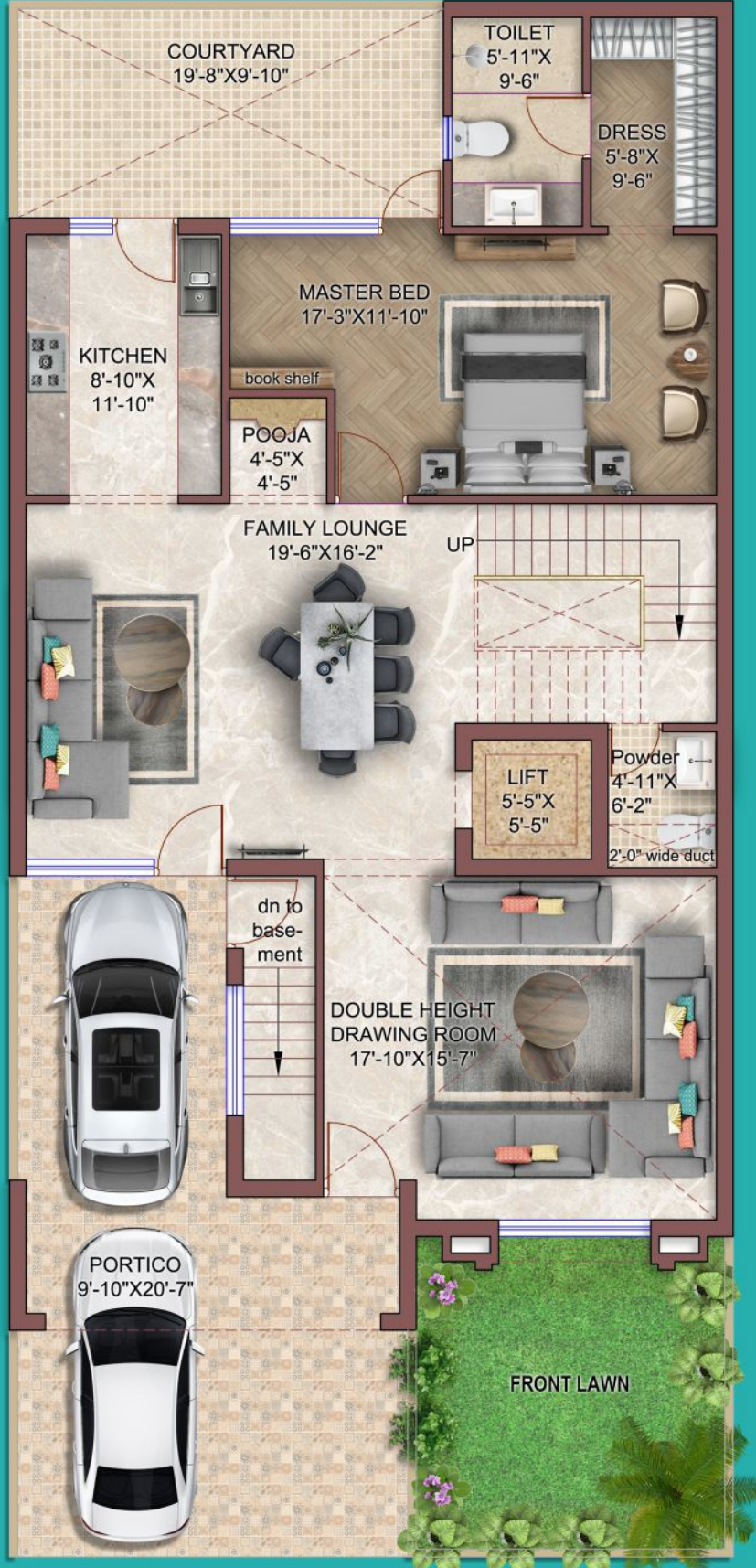
Conceptual View



Conceptual Floor Plan



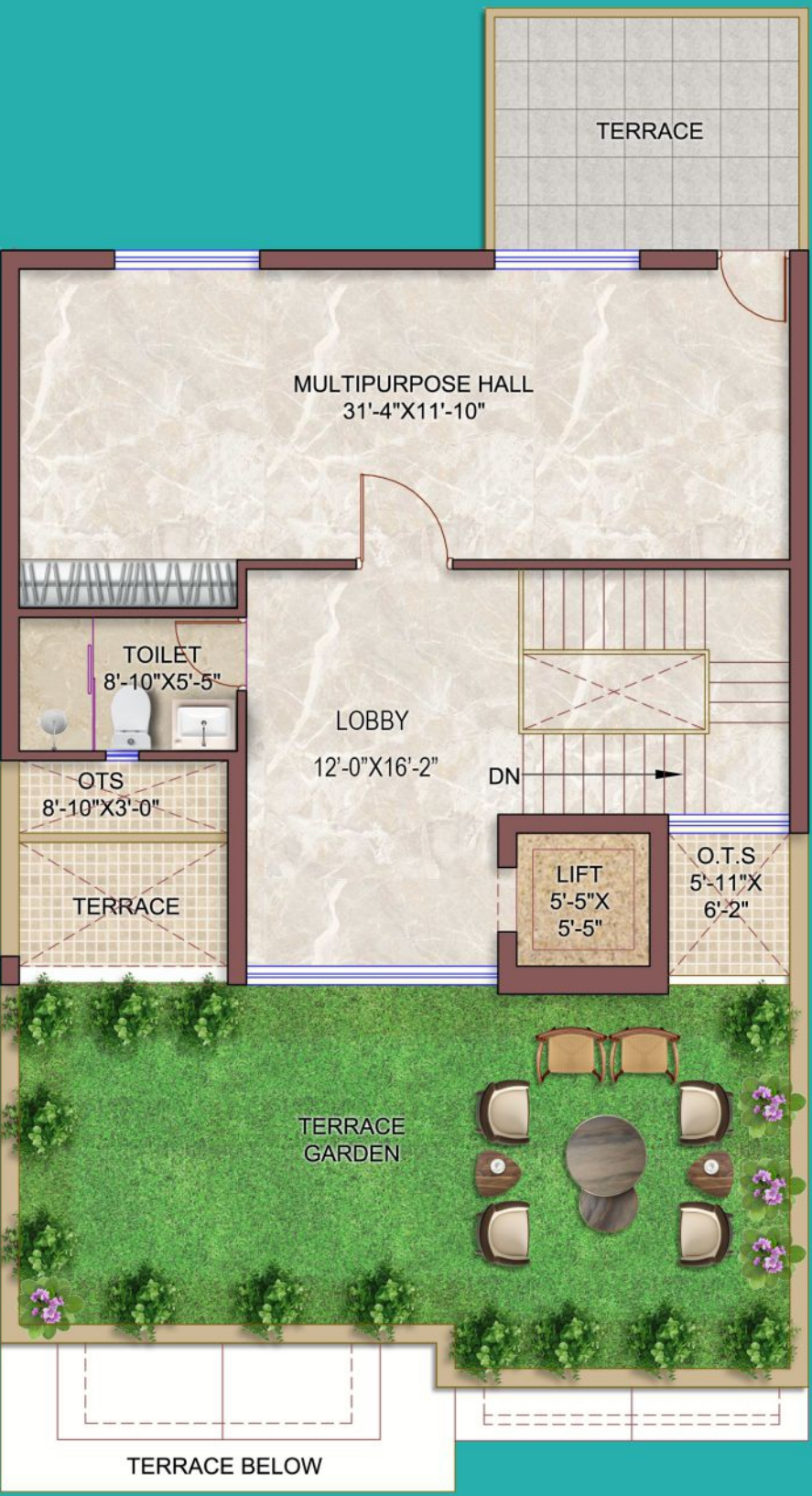
Basement



Ground Floor



First Floor



Second Floor





Enjoy the luxurious  
way of your life



## Delivered Project

### **CELEBRITY GREENS**

100, 3BHK Flats, Tower N& P, Sushant Golf City, Lucknow

### **SPRING GREENS**

627, 2BHK & 3 BHK Flats , Faizabad Road, Lucknow

### **URBANAC BUSINESS PARK**

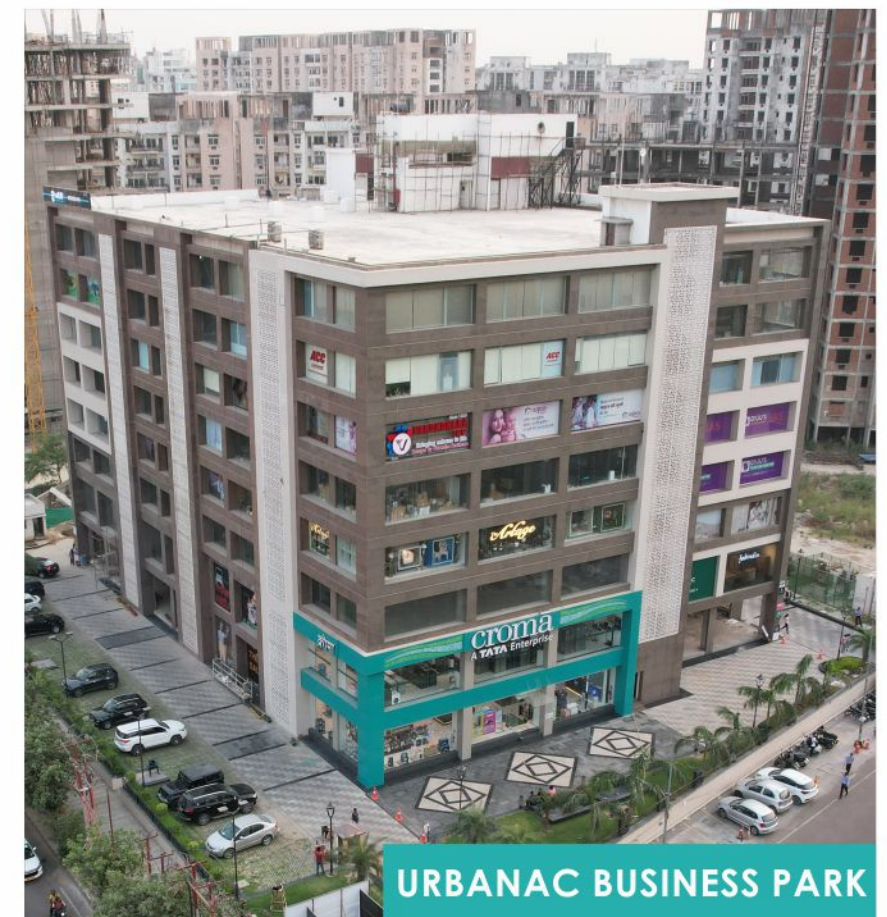
1,88,000 sq.ft. Retail & Office spaces, Vibhuti Khand,  
Gomti Nagar, Lucknow



**CELEBRITY GREENS**



**SPRING GREENS**



**URBANAC BUSINESS PARK**



## A home in the close proximity of

Urbanac Graden offers you a home in the most prominent and enchanting location of the city. Urbanac Garden is blessed with the richest neighbourhood.

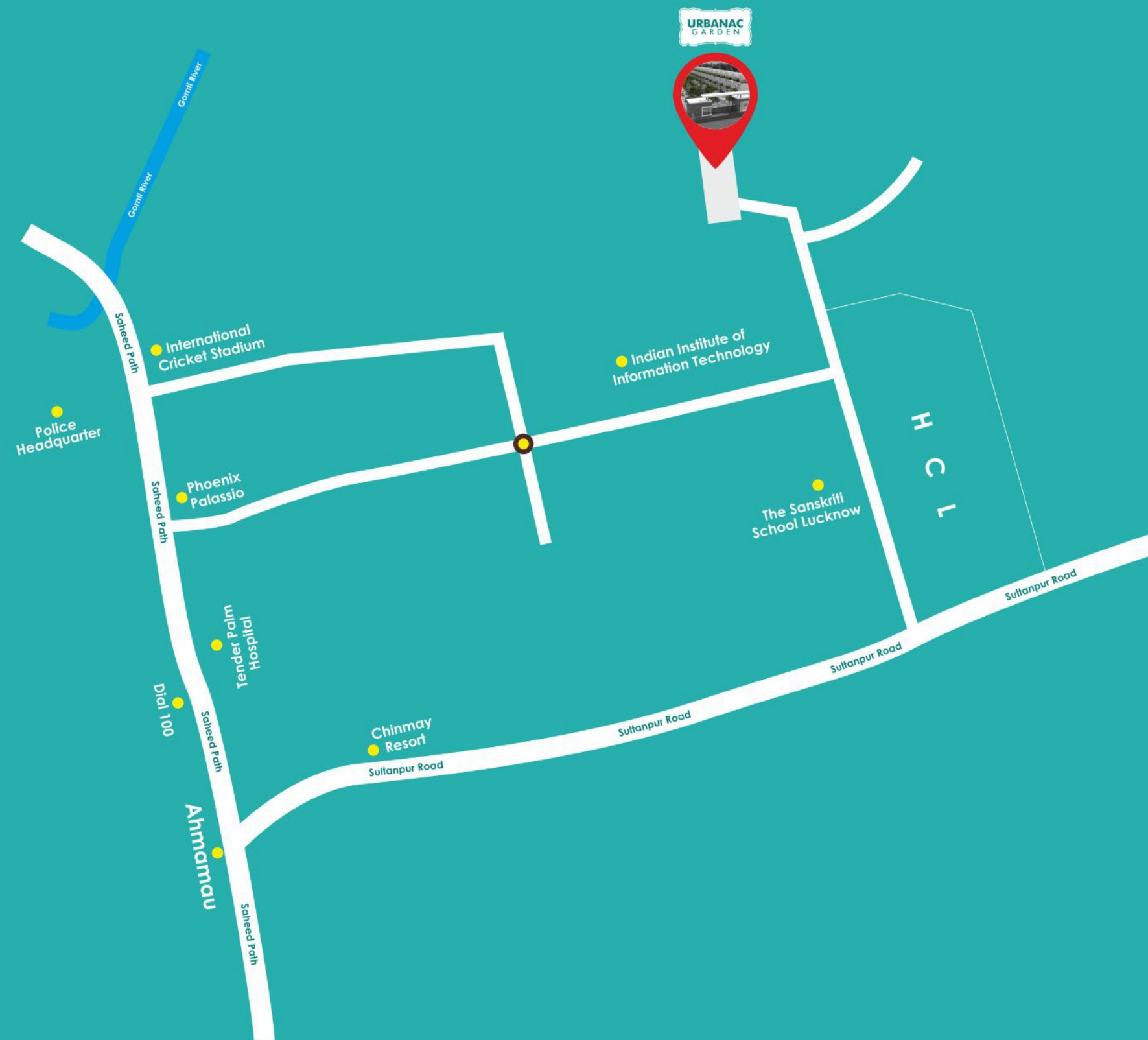
Urbanac Graden is not only strategically located but also it brings you near to everything important. Urbanac Garden has seamless connectivity to the rest of the city, it is situated near Amar Shaheed Path. So in Urbanac Garden you will be living a luxurious way of life. **SO COME AND FIND YOUR HAPPY PLACE AT URBANAC GARDEN.**

### Drive From Site

HCL IT City	2 min
Sultanpur Road	3 min
Amar Saheed Path	3 min
Phoenix Palassio	3 min
Dial 100	4 min
Ekana Cricket Stadium	5 min
School / Colleges	8 min
Lulu Mall	8 min
Medanta Hospital	10 min
International Airport	20 min
Charbagh Railway Station	30 min

### Get Connected Seamlessly

## Location Map



**Disclaimer** : All the images, Floor plans, Key plan shown in the brochure are just conceptual representation of the project.





---

Office Address.: Off. No. 705-706, 7<sup>th</sup> Floor, Urbanac Business Park, Vibhuti Khand, Gomti Nagar, Lucknow-226010

Site Address: Plot No.515 Kha, Mastemau, Chak Gajaria, Lucknow-226002

Tel. No.: 9235627808 | 9235550004 | 7084841212

E-mail: [cidpltd@gmail.com](mailto:cidpltd@gmail.com) | [info@chinmaydevelopers.com](mailto:info@chinmaydevelopers.com) | Website: [www.chinmaydevelopers.com](http://www.chinmaydevelopers.com)